



T&S BRASS AND BRONZE WORKS, INC.

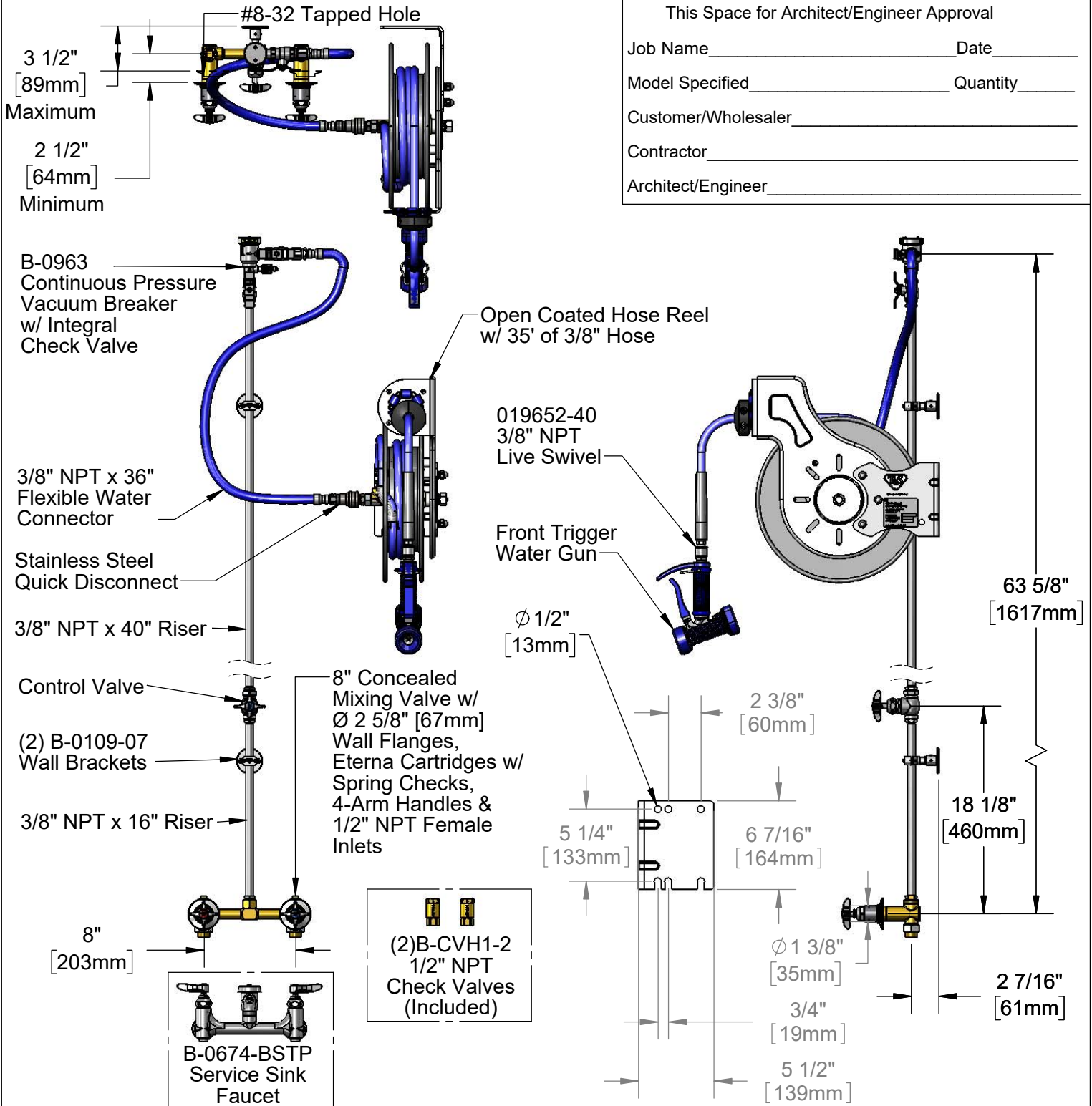
2 Saddleback Cove / P.O. Box 1088
Travelers Rest, SC 29690

Model No.

B-1454

Item No.

Travelers Rest, SC: 800-476-4103 • Simi Valley, CA: 800-423-0150 • Fax: 864-834-3518 • www.tsbrass.com



This Space for Architect/Engineer Approval

Job Name _____ Date _____

Model Specified _____ Quantity _____

Customer/Wholesaler _____

Contractor _____

Architect/Engineer _____

Product Specifications:
Open Coated Hose Reel w/ 35' of 3/8" Hose, Blue Front Trigger Water Gun w/ Swivel, Vacuum Breaker, 3/8" NPT Flexible Water Connector, 8" Concealed Wall Mount Mixing Faucet, Control Valve, (2) Check Valves & 8" Service Sink Faucet

Product Compliance:
NSF 61 Exempt (Non-Potable)
2019 DOE PRSV Non-Compliant
ASSE 1056 (VB)
ASSE 1001 (VB)

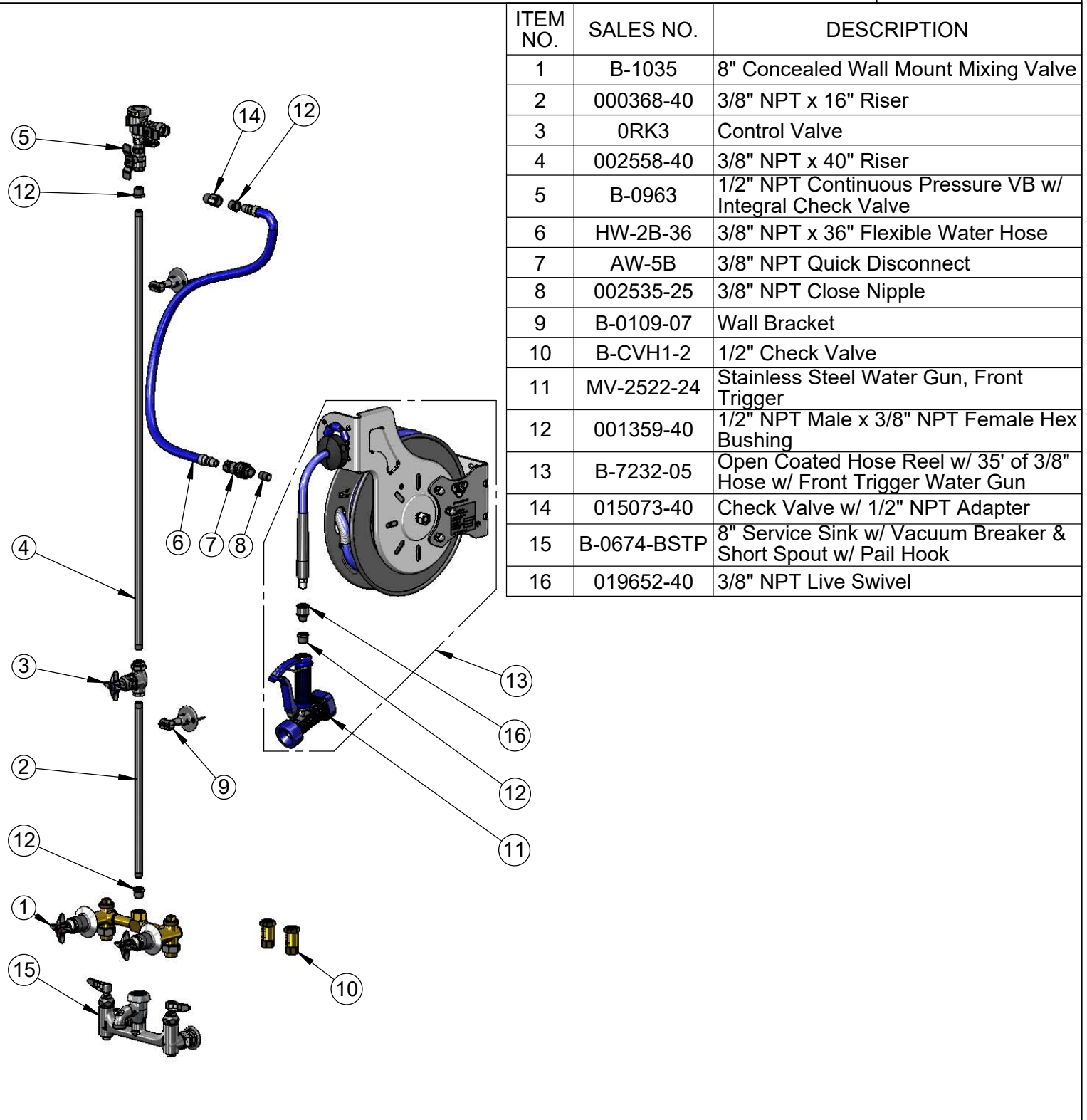


T&S BRASS AND BRONZE WORKS, INC.
 2 Saddleback Cove / P.O. Box 1088
 Travelers Rest, SC 29690

Model No.
B-1454

Item No.

Travelers Rest, SC: 800-476-4103 • Simi Valley, CA: 800-423-0150 • Fax: 864-834-3518 • www.tsbrass.com



| ITEM NO. | SALES NO. | DESCRIPTION |
|----------|-------------|--|
| 1 | B-1035 | 8" Concealed Wall Mount Mixing Valve |
| 2 | 000368-40 | 3/8" NPT x 16" Riser |
| 3 | 0RK3 | Control Valve |
| 4 | 002558-40 | 3/8" NPT x 40" Riser |
| 5 | B-0963 | 1/2" NPT Continuous Pressure VB w/ Integral Check Valve |
| 6 | HW-2B-36 | 3/8" NPT x 36" Flexible Water Hose |
| 7 | AW-5B | 3/8" NPT Quick Disconnect |
| 8 | 002535-25 | 3/8" NPT Close Nipple |
| 9 | B-0109-07 | Wall Bracket |
| 10 | B-CVH1-2 | 1/2" Check Valve |
| 11 | MV-2522-24 | Stainless Steel Water Gun, Front Trigger |
| 12 | 001359-40 | 1/2" NPT Male x 3/8" NPT Female Hex Bushing |
| 13 | B-7232-05 | Open Coated Hose Reel w/ 35' of 3/8" Hose w/ Front Trigger Water Gun |
| 14 | 015073-40 | Check Valve w/ 1/2" NPT Adapter |
| 15 | B-0674-BSTP | 8" Service Sink w/ Vacuum Breaker & Short Spout w/ Pail Hook |
| 16 | 019652-40 | 3/8" NPT Live Swivel |

Product Specifications:
 Open Coated Hose Reel w/ 35' of 3/8" Hose, Blue Front Trigger Water Gun w/ Swivel, Vacuum Breaker, 3/8" NPT Flexible Water Connector, 8" Concealed Wall Mount Mixing Faucet, Control Valve, (2) Check Valves & 8" Service Sink Faucet

Product Compliance:
 NSF 61 Exempt (Non-Potable)
 2019 DOE PRSV Non-Compliant
 ASSE 1056 (VB)
 ASSE 1001 (VB)