

Project _____
 Item _____
 Quantity _____
 FCSI Section 11400 _____
 Approved _____
 Date _____

STORAGE CRATES & STORAGE DOLLIES

Models

- PLSK-24



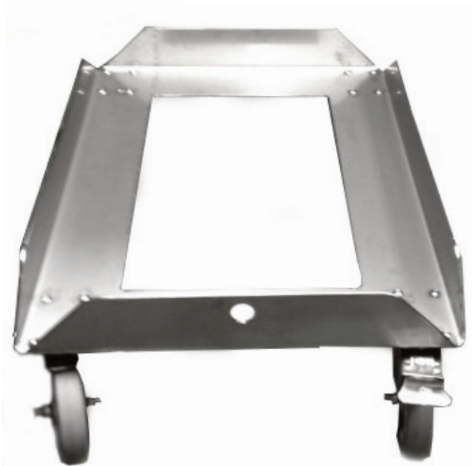
STORAGE CRATES

Standard Features

- Capacity for two-2 gallon Casings
- Capacity for four-(2) 2 gallon or four (4) 1 gallon Casings
- Dimensions: 19" x 13" x 6" high
- Steel Ring reinforced, Injection molded Polyethelene for greater durability
- Standard colors: blue or green
- Stackable, with recessed bottom to prevent product damage
- Large "Hand holes" for lifting
- Tapered bottom gridwork for drainage
- Accepted for use in U.S.D.A. Inspected Facilities

Models

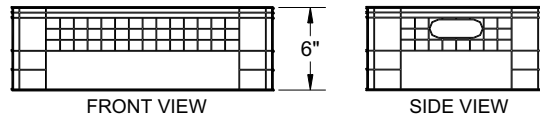
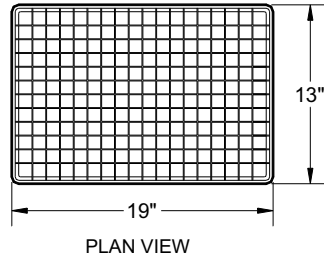
- D-2028S
- BD-2028A



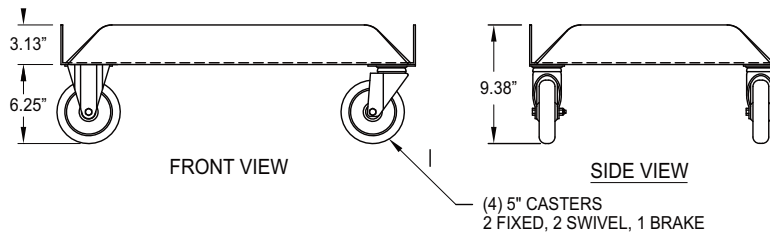
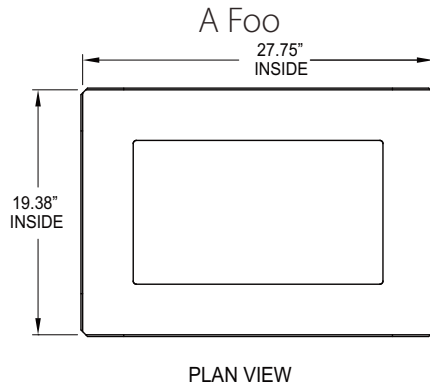
STORAGE DOLLIES FOR COOK CHILL CRATES

Standard Features

- Heavy Duty Stainless Steel or Aluminimum construction
- Capacity for up to 600 lbs. of Products
- Dolly holds two Crates side by side
- Large 5" Casters, two fixed and two swivel, one with brake
- Interior Dimensions- 19 3/8" x 27 3/4"
- Accepted for use in U.S.D.A. Inspected Facilities
- Maximum Stack Height FILLED• 8 High - 2 Crates Side by Side for a Total of 16 crates



STORAGE CRATE



Cleveland Range reserves right of design improvement or modification, as warranted.

(NOT TO SCALE)