



Your Solutions Partner

Specifications

F.O.B. Sedalia, Missouri 65301



Shown with optional sneeze guard

OPTIONS:

- 10" deep cold pan
- Stainless steel legs
- Condensate evaporator
- Designer sneeze guards
- EconoMate Style Sneeze Guards
- 3-bar tray slides on hinged brackets
- 3-bar tray slides on fixed brackets
- Laminated tray slides
- Enclosed storage
- Fluorescent lights beneath buffet shelf
- Veneered plastic laminate on sides and ends
- Stainless steel body
- Special height - 30"
- Solid tray slides

Approval Stamp(s):

PRODUCT INFORMATION:

PROJECT: _____

ITEM: _____

QUANTITY: _____

MODEL:

Duke Salad Bar

NSF Standard 7 Compliant

- AHC-5M-N7 74"L cold pan
- AHC-6M-N7 88"L cold pan

Top:

- Heavy gauge, 300 Series stainless steel.
- Edges flanged down into stainless steel liner.

Body:

- Fully enclosed.
- Paint grip steel.
- Choice of (12) powder coat colors.
- Reinforced as required.
- 5" diameter, NSF approved casters, two (2) with brakes.

Cold Pan Liner:

- Food pans recessed 3" below top.
- Heavy gauge stainless steel.
- 8" deep X 21-3/4" front to back.
- Meets NSF Standard 7.
- Recessed brackets and adapter bars.
- Drain and plug, ball valve and hose.

Refrigeration:

- Refrigerant coil - 448a.
- Condensing unit - 120 volt, single phase.
- Controls, electric cord and plug.
- Removable stainless steel louvered grille for compressor compartment.

Agency Listings:



UL/ANSI NSF7

Specification subject to change



DUKE MANUFACTURING CO.

2305 N. Broadway

St. Louis, MO 63102

800.735.3853 Toll Free

314.231.5074 Fax

www.dukemfg.com

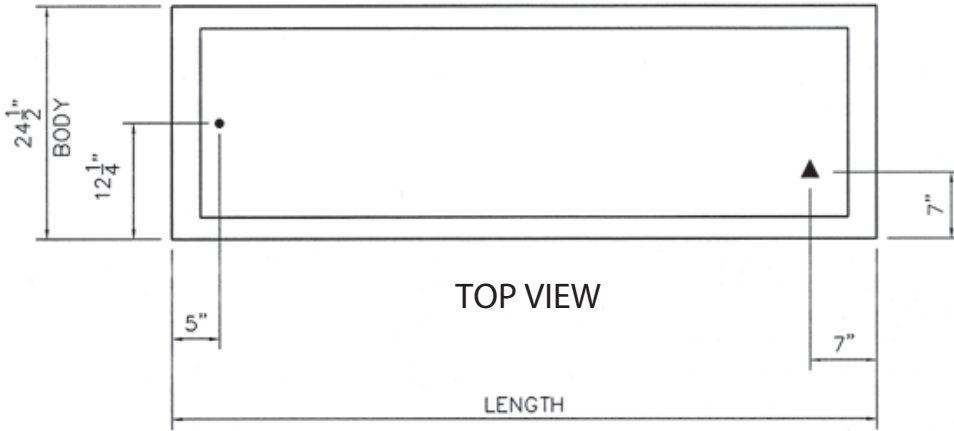
SS-1208 Duke Salad Bar - NSF7

REV B 04/22/2021

Duke Salad Bar - NSF7

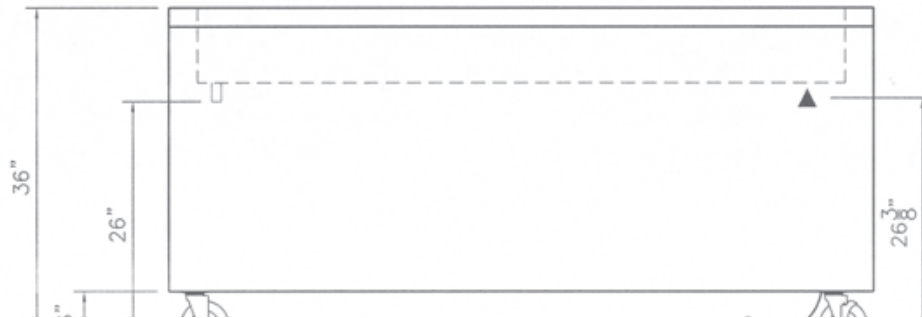
ELECTRICAL SPECIFICATIONS:

Model	120 Volt - HZ 60		
	Amps	Watts	NEMA
AHC-5M-N7	6.78	810	5-15
AHC-6M-N7	6.78	810	5-15

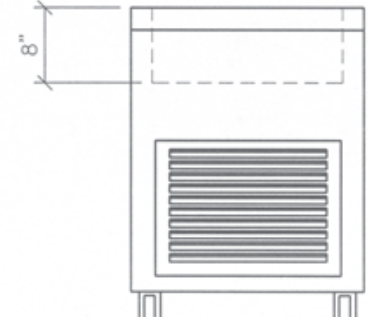


LEGEND	
▲	ELECTRICAL CONNECTION
•	DRAIN LOCATION

FRONT VIEW



SIDE VIEW



DIMENSIONS:

Freight Class: 100

Model	Length		Body Width		Height w/o canopy		Cold Pan Size						Cube ft. crated	Crated Ship Weight	
	in.	cm	in.	cm	in.	cm	L		W		D			lbs.	kg
							in.	cm	in.	cm	in.	cm			
AHC-5M-N7	74.0	188.0	24.5	62.2	36.0	91.4	70.5	179.1	21.75	55.25	8	20.32	58.1	500	227.3
AHC-6M-N7	88.0	223.5	24.5	62.2	36.0	91.4	84.5	214.6	21.75	55.25	8	20.32	68.2	580	263.6



Duke Manufacturing Co.
 2305 N. Broadway
 St. Louis, MO 63102

Phone: 314-231-1130
 Toll Free: 1-800-735-3853
 Fax: 314-231-5074

www.dukemfg.com