

- **FB3S-2H** 36"L x 43"D x 52"H
- **FB5S-4H** 64"L x 43"D x 52"H
- **FB10S-8H** 122"L x 43"D x 52"H

### Included

- Holds full size 6"D pans (pans not included)
- One year parts & labor warranty
- Open rear storage
- Rear wrapping board, white Sanalite®
- Wells with individual temperature controls



**FB3S-2H**

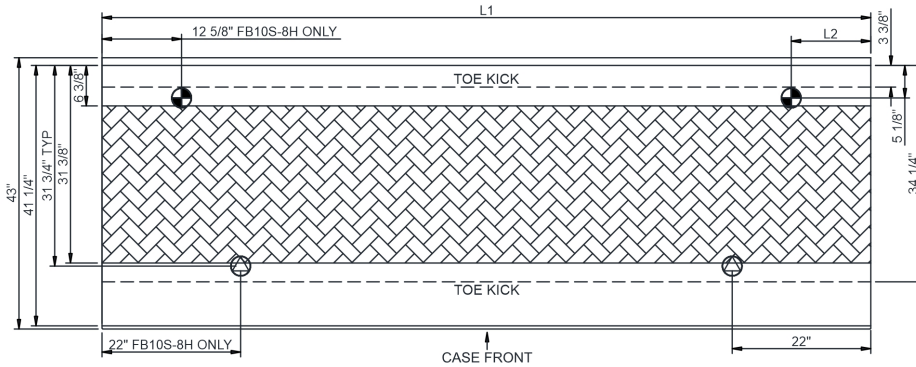
Specify	Standard Features	Additional Options
<b>EXTERIOR COLOR</b>	• Laminate (stock colors)	• Laminate (non-stock colors) • Powder coated (stock/non-stock colors) • Powder coated Silversan Black • Stainless steel
<b>LOWER FRONT PANEL COLOR</b>	• Powder coated Silversan Black	• Powder coated (stock/non-stock colors) • Stainless steel
<b>LOWER FRONT PANEL HEIGHT</b>	• 15-5/8" Lower front panel height	• 8-5/8" Lower front panel height
<b>BASE SUPPORT</b>	• Rail system for shims	
<b>BUMPER FRONT</b>	• None	• 1" Boston bumper (specify color) • 1" Stainless steel plate rail bumper
<b>COUNTERTOP SURFACE</b>	• Stainless steel	• 3 cm. Quartz
<b>REAR STORAGE</b>	• Open rear storage	
<b>SNEEZE GUARD</b>	• Clear glass w/ stainless steel ADM posts	• Clear frameless glass (3" glass gaps case-to-case)
<b>ELECTRICAL CONNECTION</b>	• Electrical leads	
<b>HEATED WELLS</b>	<sup>1</sup> • Steam heat with manual fill system	• Dry heat (no water required) <sup>1</sup> • Steam heat with autofill system
<b>MISCELLANEOUS</b>		• Second year parts & labor warranty

**Std Notes:** 1 - Floor drain required

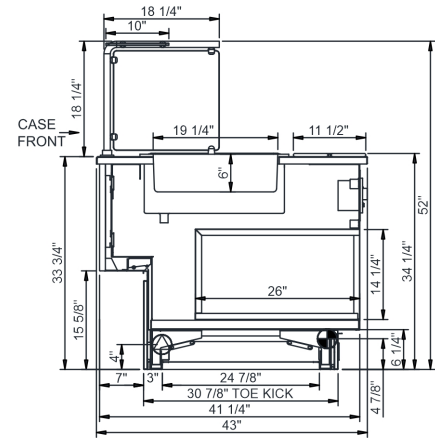
**Option Notes:** 1 - Floor drain required

<b>Intended Environment:</b> Type I - Designed to operate in ambient conditions of 75°F with 55% relative humidity unless noted otherwise in system information below.		
<b>Zone</b>	<b>Intended Product To Be Displayed</b>	<b>Warmest Avg Prod Temp ° F</b>
1	Unpackaged heated product	160

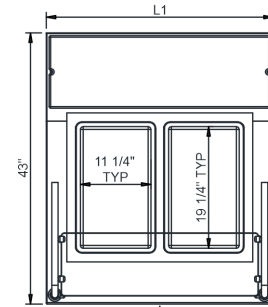
## PLAN VIEW



## SIDE VIEW



	WELLS
FB3S-2H	2
FB5S-4H	4
FB10S-8H	8



**NOTE: ALL DIMENSIONS APPROXIMATE**

- ELECTRICAL JUNCTION BOX**  
(SUPPLIED WITH 6" LEADS OR POWER CORD).
- LOCATION OF DRAIN TUBE FOR REMOTE REF.**  
ONLY (SUPPLIED WITH 3/4" OR 1 1/2" PVC TUBE).

- REFRIGERATION LINE CONNECTION.**
- REMOTE FLOOR SINK & UTILITIES**  
ACCESS AREA.

- SELF-CONTAINED CASE SERVICE ACCESS AREA.**
- DRY CASE SERVICE ACCESS AREA.**

Model Technical Specifications																
Model	L"	L1"	L2"	System Circuit Volts			Phs	Freq	Amps ***	Watts	Wires	NEMA Plug	SST	Conv. Rack BTUH	Para. Rack BTUH	Est Wt
FB3S-2H	N/A	36.00	12.63	Heat (N/A)	Circuit #1	208	1	60	11.59	2,410	2+G	Leads Multiple	N/A	N/A	N/A	700
				Heat (N/A)	Circuit #1	208	1	60	4.27	888	2+G	Leads Multiple	N/A	N/A	N/A	
FB5S-4H	N/A	64.00	12.63	Heat (N/A)	Circuit #1	208	1	60	23.06	4,797	2+G	Leads Multiple	N/A	N/A	N/A	900
				Heat (N/A)	Circuit #1	208	1	60	8.70	1,810	2+G	Leads Multiple	N/A	N/A	N/A	
FB10S-8H	N/A	122.00	12.63	Heat (N/A)	Circuit #1	208	1	60	23.06	4,797	2+G	Leads Multiple	N/A	N/A	N/A	1,200
				Heat (N/A)	Circuit #2	208	1	60	23.06	4,797	2+G	Leads Multiple	N/A	N/A	N/A	
				Heat (N/A)	Circuit #1	208	1	60	8.70	1,810	2+G	Leads Multiple	N/A	N/A	N/A	
				Heat (N/A)	Circuit #2	208	1	60	8.70	1,810	2+G	Leads Multiple	N/A	N/A	N/A	

\*\*\* Does not include electric defrost on freezer models.

### Regulatory Approvals:

All Models	ETL Listed to UL 197 ETL Listed to CAN/CSA 22.2 No. 109 ETL Sanitation to NSF/ANSI 4
------------	--



### Important Notes:

- 1) ELECTRICAL NOTE: If GFCI is required, a GFCI breaker MUST be used in lieu of a GFCI receptacle.
- 2) Units must be shimmed during installation to ensure the unit is level and plumb.
- 3) Floor drain required for steam wells.
- 4) Auto fill options use 1/2" water line.
- 5) Manual fill and Auto fill options use 3/4" drain line.

**⚠ WARNING:** This product can expose you to chemicals, including Urethane (Ethyl Carbamate), which are known to the State of California to cause cancer and birth defects or other reproductive harm. For more information go to [www.P65Warnings.ca.gov](http://www.P65Warnings.ca.gov).