

Blender Station w/ Drainboard

25" and 30" Wide Units



Item #: _____	Qty #: _____
Model #: _____	
Project #: _____	



PRDB-19 Series
25" Wide Units



PRDB-24 Series
30" Wide Units



15A - 120V GFI Duplex
Receptacle Hidden
Beneath Blender Shelf



FEATURES:

- Removable perforated drainboard top.
- Recessed blender shelf with grommet hole.
- 15A - 120V electrical GFI duplex outlet hidden beneath shelf for blenders.
- Sound deadened.
- Stainless steel top, apron, sides and legs with 1" adjustable stainless steel bullet feet
- Adjustable stainless steel side cross-bracing
- 7" backsplash.

PRDB-24 Series has rear deck for extra storage

MATERIAL:

- Drainboard:** 18 gauge, 300 stainless steel
- Body Sides & Backsplash:** 20 gauge, 300 stainless steel
- Blender Shelf Sides:** 14 gauge, 300 stainless steel
- Legs:** 1 5/8" O.D. 18 gauge, 300 stainless steel with 1" adjustable stainless steel bullet feet

MECHANICAL:

- 1" IPS drain
- 15A - 120V duplex receptacle

OPTIONAL:

- A-15** - Chrome towel ring (packed loose)
- SU-24** - Connect underbar equipment

25" WIDE Model #	Overall Length (L)	Dist. To Drain (A)	Dist. To Drain (B)	Approx. Weight	Approx. Cu. Ft.
PRDB-19-12	12"	9"	7 1/2"	45 lbs.	9
PRDB-19-18	18"	15"	7 1/2"	50 lbs.	9

30" WIDE Model #	Overall Length (L)	Dist. To Drain (A)	Dist. To Drain (B)	Approx. Weight	Approx. Cu. Ft.
PRDB-24-12	12"	9"	12 1/2"	47 lbs.	9
PRDB-24-18	18"	15"	12 1/2"	53 lbs.	12

NOTE: Blender Stations Can Not Accommodate A Speed Rail

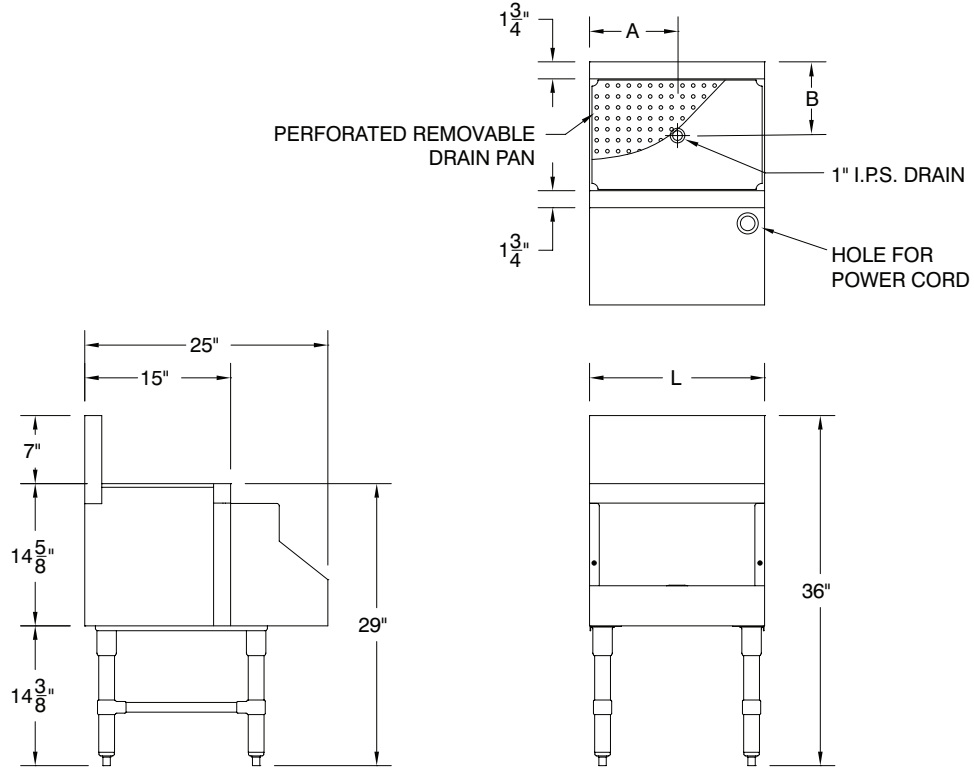
WARNING: Equipment that include faucets on this page may contain a chemical known to the State of California to cause cancer, birth defects or other reproductive harm.

DIMENSIONS and SPECIFICATIONS

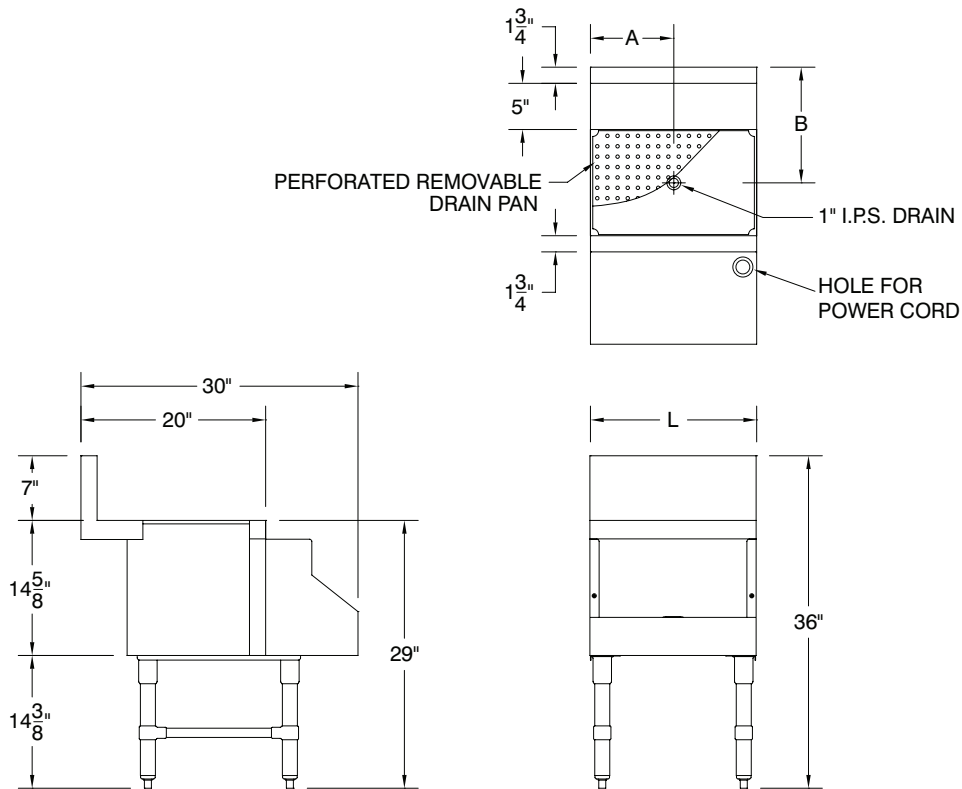
TOL Overall: $\pm .500''$ Interior: $\pm .250''$

ALL DIMENSIONS ARE TYPICAL

PRDB-19 Series



PRDB-24 Series



ADVANCE TABCO is constantly engaged in a program of improving our products. Therefore, we reserve the right to change specifications without prior notice.