

CORRECTIONAL NON-INSULATED UTILITY CABINET MODEL 150-1838-DZ

FEATURES AND BENEFITS:

- Non-insulated heavy duty cabinet for transport and storage for a rugged environment.
- Same size top and base extend past sidewalls to act as natural bumpers for protection. Extruded frame fully welded.
- Body constructed of reinforced, Hi-Tensile aluminum for strength and durability.
- Interlocking extruded sidewalls hold 18" x 26" pans and plastic food boxes on 1-1/2" centers. Reinforced with additional vertical extruded channels which are riveted and welded in place.
- One-piece, reinforced, full length door swings 270°. Heavy duty security hinges attached with tamper-proof fasteners.
- Extended slide latch with two lock hasps covers 80% of door length for maximum security.
- Heavy duty extruded aluminum tie bars welded in place.
- Heavy duty 5" swivel casters, two with brakes. Provides mobility when fully loaded.

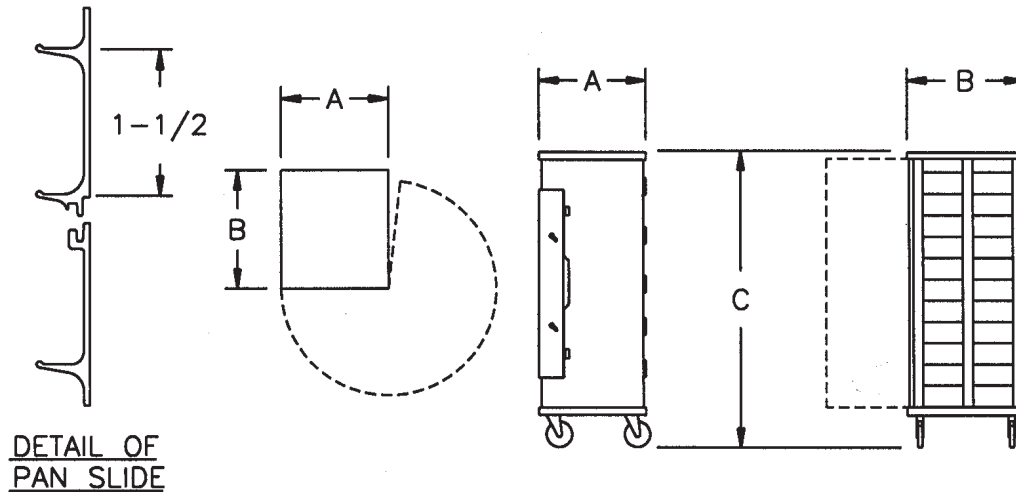


150-1838-DZ



ACCESSORIES and OPTIONS (Available at extra cost):

- o Corner Bumpers
- o Perimeter Bumper
- o Push Handle
- o Left-Hand Hinged Doors
- o Kold Keepers
- o Various Caster Options



| CRES COR MODEL NO. | PAN | | | DIM "A" | DIM "B" | DIM "C" | INSIDE DIMENSIONS | | | WEIGHT ACT. | |
|-----------------------|-----|-----------|----|---------|---------|---------|-------------------|-------|--------|----------------|-----|
| | CAP | SIZE | | WIDTH | DEPTH | HEIGHT | WIDTH | DEPTH | HEIGHT | | |
| 150-1838-DZ | 38 | 18 X 26 | IN | 20-7/8 | 27-1/2 | 69-3/4 | 18-1/16 | 26 | 61-1/2 | LBS | 125 |
| | | 460 X 660 | MM | 530 | 700 | 1775 | 460 | 660 | 1565 | KG | 57 |

When ordering bumpers, add 2" to overall dimensions.

ALL ALUMINUM CONSTRUCTION IS RIVETED, WELDED AND FINISHED.

CABINET:

- Posts: Extruded channels, 7/8 x 2-1/4 x .102, welded to top and base, form a solid frame.
- Sides: Interlocking extruded 6" panels, smooth outer sides reinforced with 1 x 2 x .125 extruded channel, riveted and welded in place.
- Reinforced back panel: Fitted into posts, riveted to top and bottom.
- Tie bar: Welded in place.
- Top: One piece .100 aluminum.

PAN SLIDES:

- Extruded interlocking side walls act as pan slides on 1-1/2" centers.

BASE:

- One piece construction, .190 aluminum.
- Casters: 5" dia., swivel, modulus tires, 1-1/4 wide, load cap. 250 lbs. each, temp. range -45°/+180°F. Delrin bearings. Front casters equipped with brakes.

DOOR:

- Panel: .100 formed aluminum.
- Reinforcement: 3/8 x 1-1/2 extruded bars riveted horizontally to top, center and bottom.
- Latch: Gravity type, .125 aluminum with lock hasps (top and bottom).
- Swings 270° on 5 butt hinges, riveted to post and door panel.



5925 Heisley Road • Mentor, OH 44060-1833
 Phone: 877/CRESCOR • Fax: 440/350-7267
 www.crescor.com

© Crescent Metal Products, Inc. 2005 All rights reserved.

In line with its policy to continually improve its products, CRES COR reserves the right to change materials and specifications without notice.

Litho in U.S.A.