

ITEM NO. _____ PROJECT _____ QUANTITY _____

36" CRUISE LINE BROILERS

MODEL:

CLS36 SERIES



Model CLS36 shown

MARINE SHORT/BID SPECIFICATION

Broiler shall be a LANG Manufacturing Marine Model

CLS36 ____ [Specify one]:

-240V

-440V

MARINE PRODUCT WARRANTY

Two years, parts & labor [Labor in U.S. only]

MARINE CONSTRUCTION FEATURES

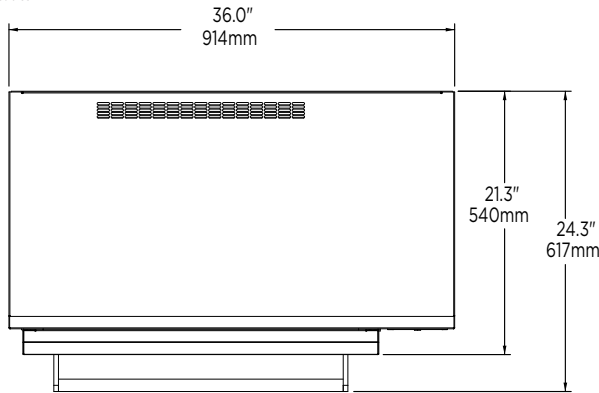
- 304 stainless steel throughout
- Top mounted Incoloy sheathed heating elements
- Multi-position, adjustable chrome plated rack
- Stainless steel removable drip drawer with marine latch
- Standard finish on all broilers shall be of type 304 18-8, non-magnetic 304 stainless steel.
- Adjustable bolt-down legs standard.
- Radiant rod heating units are enclosed tubular type with incoloy sheath.
- Broiler rack shall be counter balanced with adjustable height, roll out, and removable drip tray.
- Rack has option of 4 levels.
- Watertight control panel

36" Cruise Line Broilers *Marine Models

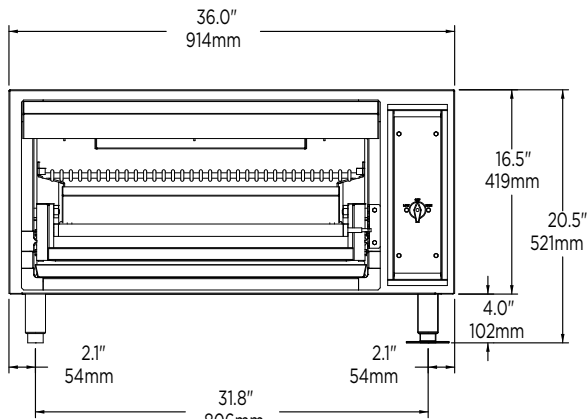
INSTALLATION REQUIREMENTS

Standard 440V/480V 3-Phase electrical connection

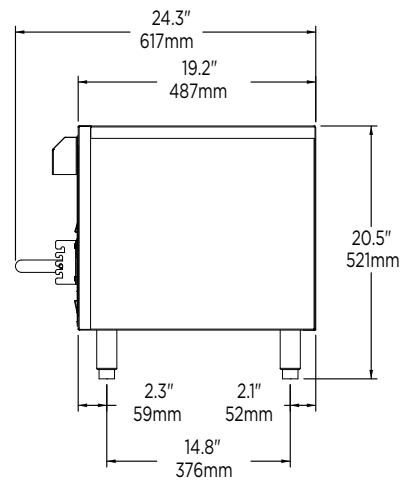
Consult local and marine codes



TOP



FRONT



SIDE

Model	Height x Width x Depth (with standard legs)	Clearance from combustible surface	Weight	Freight Class
			Shipping	
CLS36-240V	20.5" x 36.0" x 24.3" 521mm x 914mm x 617mm	Sides: 3" (76mm) Back: 3" (76mm)	271 lbs. 123 kg	85
CLS36-440V	20.5" x 36.0" x 24.3" 521mm x 914mm x 617mm	Sides: 3" (76mm) Back: 3" (76mm)	271 lbs. 123 kg	85
Model	Volts AC - Hz	Total kW	Amps	
CLS36-240V	60	7.0	29.2	
CLS36-440V	60	6.0	13.6	

Due to continuous improvements, specifications subject to change without notice

