

# "PB-DIIBWS18" DROP-IN ICE BIN w/Water Station

**FEATURES:**

- Includes Drain Plugs PBDR-15CP & PBDR-325CP
- 11" Deep Insulated Ice Bin
- Removable Sliding Lid For Ice Bin
- Removable Water Sink Grate
- (-P) Includes PBF-SGL-LF Glass Filler Faucet
- Includes Removable Side Splash

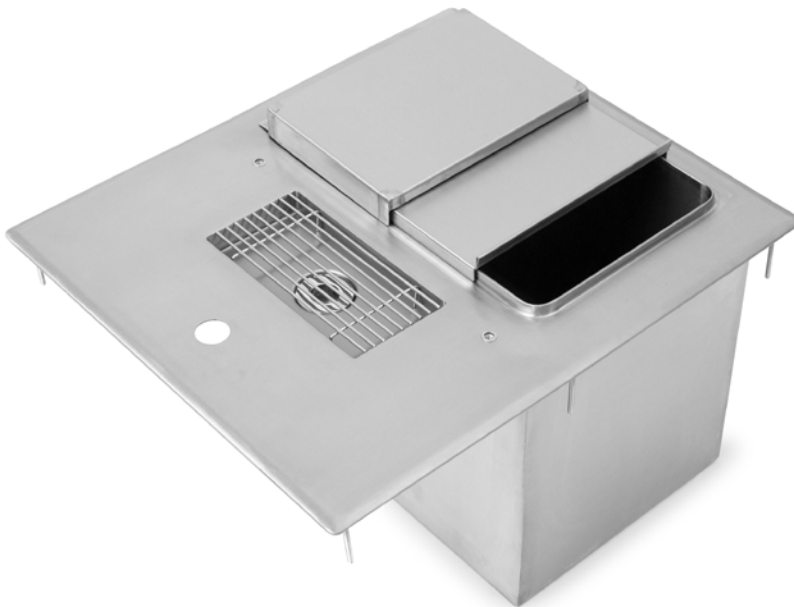
**SPECIFICATIONS:**

- Top: Stainless Steel Tops Are Tig Welded, Exposed Welds Polished To Match Adjacent Surface
- 14GA 300 Series Stainless Steel Top
- 18GA 300 Series Stainless Steel Base

**CERTIFICATIONS:**



PB-DIIBWS1821-P



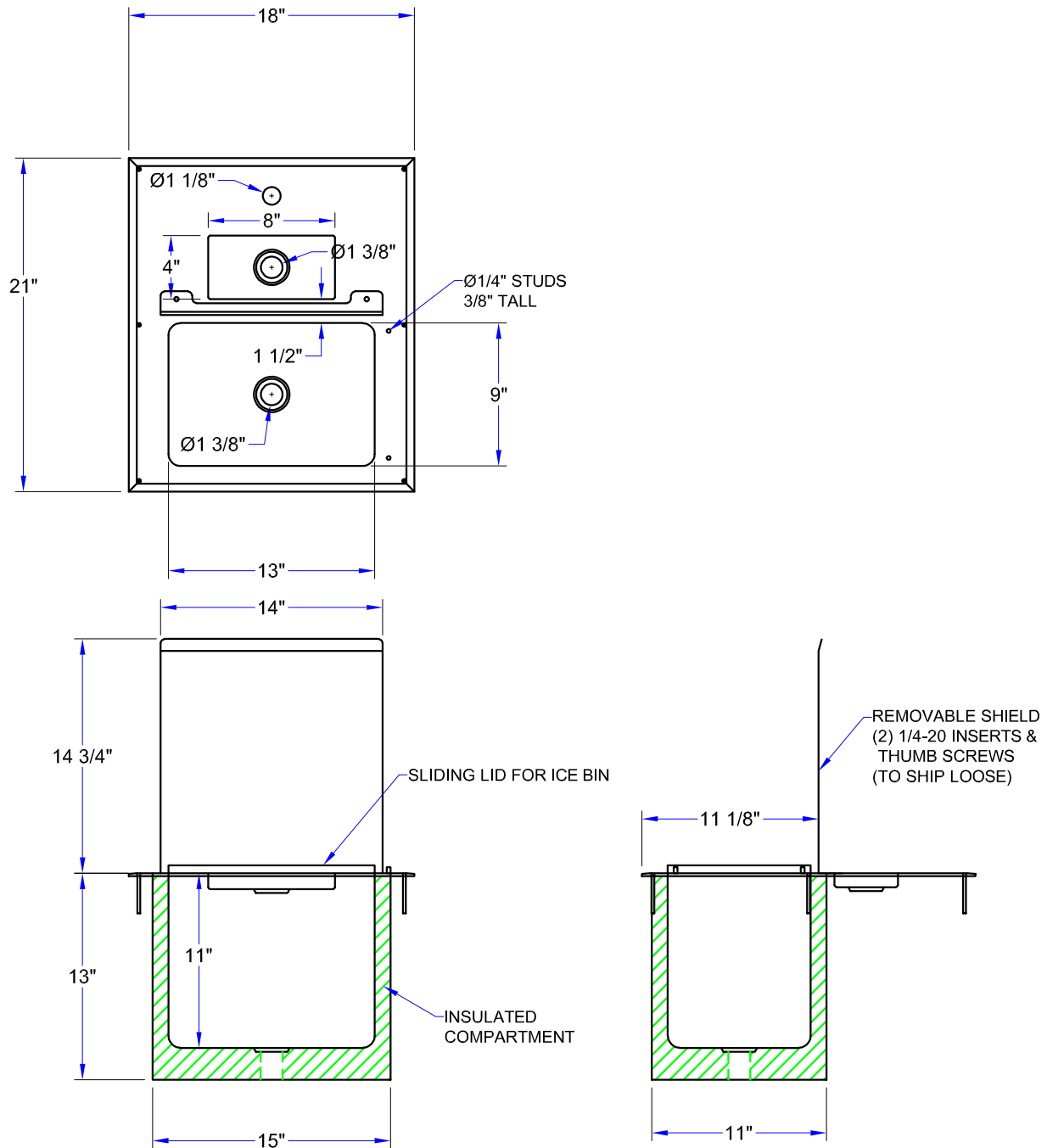
PB-DIIBWS1821-P

## "PB-DIIBWS-18" DROP-IN ICE BIN

MODEL	UNIT SIZE (L X W X H)	BASIN SIZE (L X W X H)	FAUCET	WEIGHT (LBS)	RECOMMENDED CUTOUT SIZE	ICE CAPACITY (LBS)
PB-DIIBWS1821-P	18"x21"x13"	13"x9"x11"	PBF-SGF-LF	29	17-1/8"x20"	28
PB-DIIBWS1821	18"x21"x13"	13"x9"x11"	NOT INCLUDED	29	17-1/8"x20"	28

ALL DIMENSIONS ARE TYPICAL. TOLERANCE +/- .500". JOHN BOOS & CO. RESERVES THE RIGHT TO CHANGE SPECIFICATIONS WITHOUT NOTICE.

# DETAILED SPECIFICATIONS



## "PB-DIIBWS-18" DROP-IN ICE BIN

MODEL	UNIT SIZE (L X W X H)	BASIN SIZE (L X W X H)	FAUCET	WEIGHT (LBS)	RECOMMENDED CUTOUT SIZE	ICE CAPACITY (LBS)
PB-DIIBWS1821-P	18"x21"x13"	13"x9"x11"	PBF-SGF-LF	29	17-1/8"x20"	28
PB-DIIBWS1821	18"x21"x13"	13"x9"x11"	NOT INCLUDED	29	17-1/8"x20"	28

ALL DIMENSIONS ARE TYPICAL. TOLERANCE +/- .500". JOHN BOOS & CO. RESERVES THE RIGHT TO CHANGE SPECIFICATIONS WITHOUT NOTICE.