

Specification/Data sheet

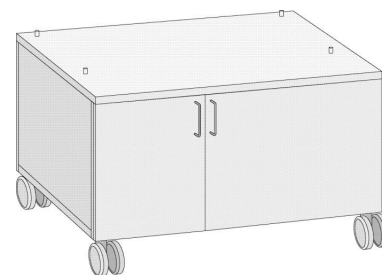
Cabinet US 4 type 62/102 - Mobile



Article number: 60.30.349

Description

- Mobile version closed on all sides
- 14 Rails
- Rail distance 65 mm
- Free space from lowest rack to the bottom plate 57 mm
- Top panel, intermediate bottom, deep-drawn shelf rests
- Adjustable feet
- Deep-drawn beaded side panels
- Hinged doors
- Weight 57 kg
- 1067(42) mm(inch)W x 989(38-7/8) mm(inch)D x 676(26-5/8) mm(inch)H



Difference to standard

- 4 Tandem steering casters (2 with brake - metal parts CNS)
- Stand for units SelfCookingCenter® 62/102 with option integrated fat drain

Capacity (GN-container/grids)

- 1/1 GN Grid x 7
- 1/1 GN 20 mm deep x 7
- 1/1 GN 40 mm deep x 7
- 1/1 GN 65 mm deep x 7
- 1/1 GN 100 mm deep x 4
- 2/1 GN Grid x 7
- 2/1 GN 20 mm deep x 7
- 2/1 GN 40 mm deep x 7
- 2/1 GN 65 mm deep x 7
- 2/1 GN 100 mm deep x 4
- Use of other container sizes 1/1 GN, (2/4 GN, steam pans 12" x 20", sheet pans 18" x 26")

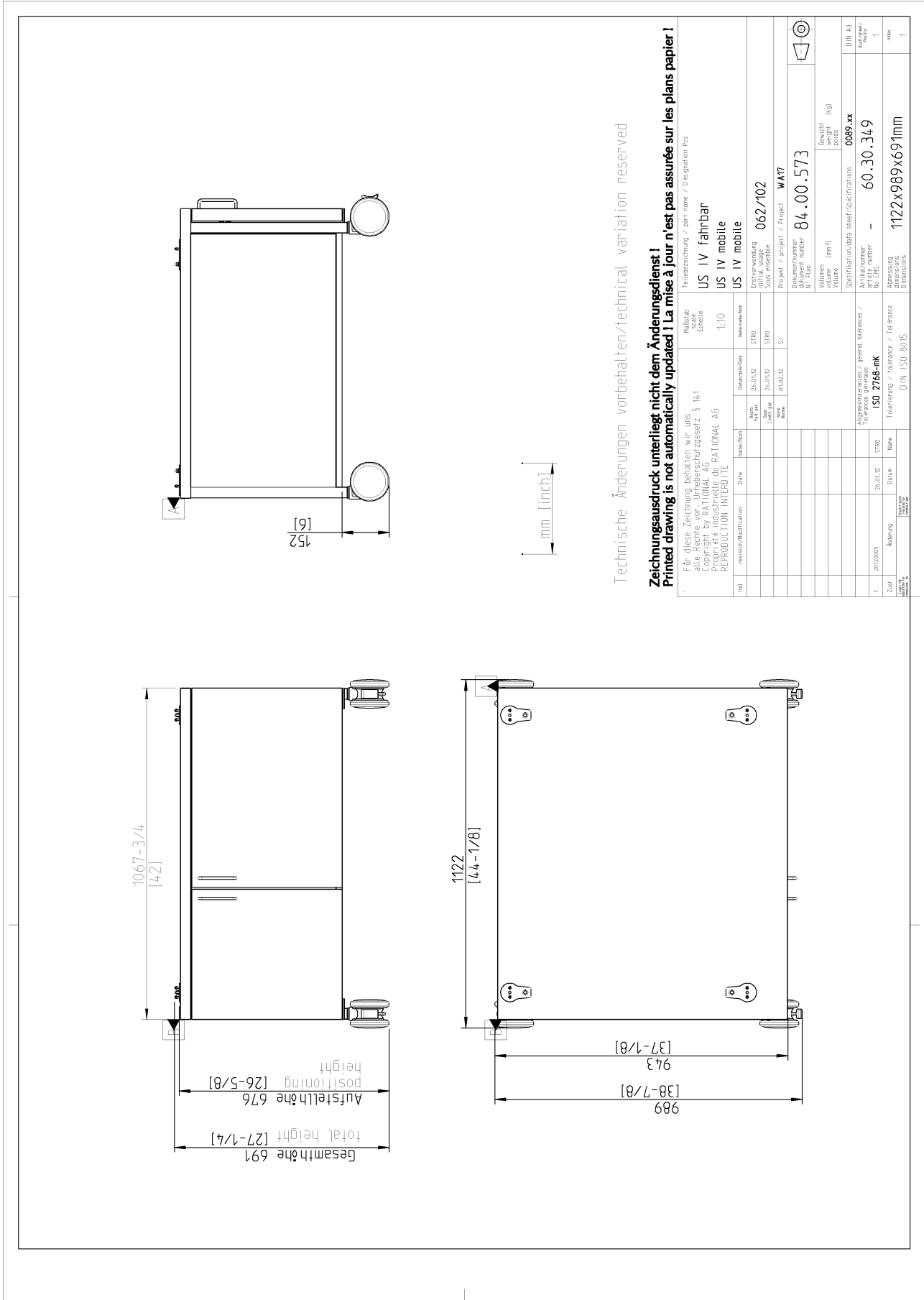
Material

- 1.4301 (CNS 304)

Hint

- To be delivered with fastening kit for mounting the unit on the US 4

Specification/Data sheet
Cabinet US 4 type 62/102 - Mobile



Technische Änderungen vorbehalten/technical variation reserved

Zeichnungsdruck unterliegt nicht dem Änderungsdienst!
Printed drawing is not automatically updated! La mise à jour n'est pas assurée sur les plans papier!

Für diese Zeichnung behalten wir uns alle Rechte vor. Urheberrechtsgesetz § 14 I Copyright by RATIONAL AG. Reproduktion ist ohne schriftliche Genehmigung RATIONAL AG. REPRODUCTION INTERDITE		Teilbezeichnung / part name / Désignation Pcs	
Maßstab / Echelle		US IV fahrbar	
Vergrößerung / Magnification		US IV mobile	
Verkleinerung / Reduction		US IV mobile	
Date		062/102	
Name / Nom		WAT7	
Projekt / project		062/102	
Dokumentnummer / document number		84.00.573	
Volumen / Volume		0089, xx	
Gewicht / poids		60.30.349	
Spezifikation / specification		1122x989x691mm	
Artikelnummer / article number		1	
Abmessung / Dimensions		1	
DIN A3		1	