

## "4CS6R1.5" MODULAR BASE WORK TABLES

### *16GA Stainless Steel Top w/1½" Rear Riser - Sliding Doors*

**FEATURES:**

- 1-1/2" Rear Riser With Stallion Edge On Front And 90 Degree Side Edge Bend Down For Table Line-Up
- Top Is Sound Deadened Reinforced With 2"x3" Channel Running Entire Length Of Top
- Stainless Steel Leg With Adjustable Feet
- Optional Fixed (Suffix "-1S") Or Adjustable (Suffix "-1AS") Intermediate Shelf Available
- 36" Working Height
- Shipped Standard Welded Set-Up

**SPECIFICATIONS:**

- Top: Stainless Steel Cabinet Tops TIG Welded, Exposed Welds Are Polished To Match Adjacent Surface #4 Polished, Satin Finish
- Removable Stainless Steel Legs
- Sliding Doors Are Constructed As Double Panel Doors
- Top: 16GA Type 300 Stainless Steel With #4 Polish, Satin Finish
- Body: 18GA Type 430 Stainless Steel
- Legs: Stainless Steel With Adjustable Feet



**CERTIFICATIONS:**



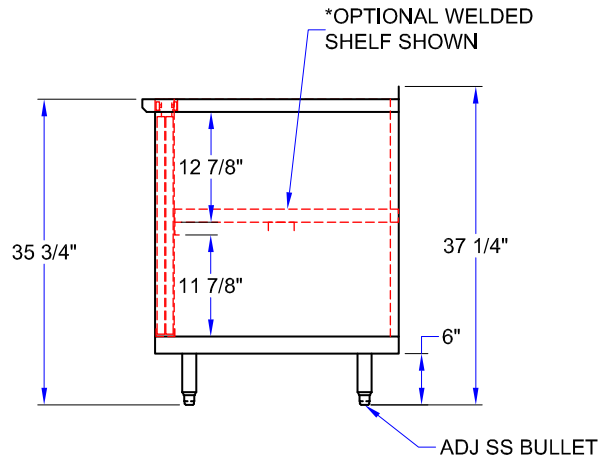
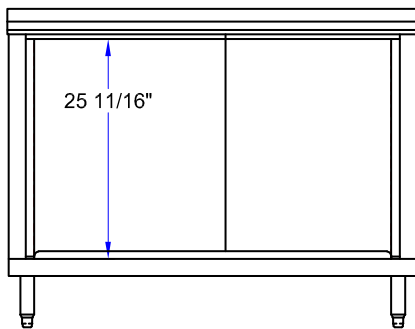
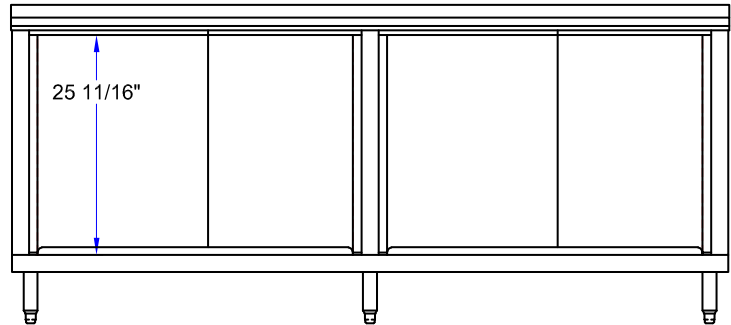
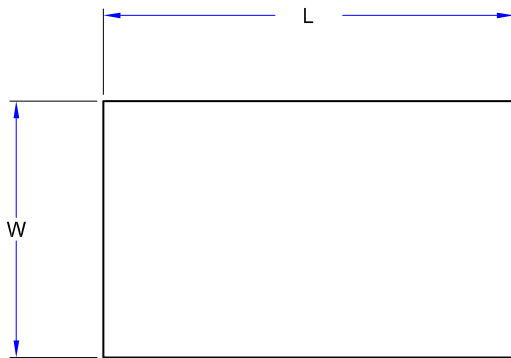
4CS6R1.5-3048

## "4CS6R1.5" MODULAR BASE WORK TABLES

LENGTH	24" WIDE	WT (LBS)	30" WIDE	WT (LBS)	36" WIDE	WT (LBS)
48"	<b>4CS6R1.5-2448</b>	270	<b>4CS6R1.5-3048</b>	295	<b>4CS6R1.5-3648</b>	330
60"	<b>4CS6R1.5-2460</b>	310	<b>4CS6R1.5-3060</b>	335	<b>4CS6R1.5-3660</b>	370
72"	<b>4CS6R1.5-2472</b>	355	<b>4CS6R1.5-3072</b>	375	<b>4CS6R1.5-3672</b>	415
84"	<b>4CS6R1.5-2484</b>	395	<b>4CS6R1.5-3084</b>	415	<b>4CS6R1.5-3684</b>	455
96"	<b>4CS6R1.5-2496</b>	455	<b>4CS6R1.5-3096</b>	460	<b>4CS6R1.5-3696</b>	500
108"	<b>4CS6R1.5-24108</b>	485	<b>4CS6R1.5-30108</b>	460	<b>4CS6R1.5-36108</b>	540
120"	<b>4CS6R1.5-24120</b>	520	<b>4CS6R1.5-30120</b>	500	<b>4CS6R1.5-36120</b>	580
132"	<b>4CS6R1.5-24132</b>	555	<b>4CS6R1.5-30132</b>	608	<b>4CS6R1.5-36132</b>	623
144"	<b>4CS6R1.5-24144</b>	590	<b>4CS6R1.5-30144</b>	635	<b>4CS6R1.5-36144</b>	665

ALL DIMENSIONS ARE TYPICAL. TOLERANCE +/- .500". JOHN BOOS & CO. RESERVES THE RIGHT TO CHANGE SPECIFICATIONS WITHOUT NOTICE.

# DETAILED SPECIFICATIONS



## MODEL # STRUCTURE

- R = Riser
- 6 = 16GA
- CS = Sliding Doors
- 4 = 430 S.S. Base
- 1.5 = 1-1/2" Rear Riser
- 24 = Width
- 60 = Length

**4CS6R1.5-2460**

### "4CS6R1.5" MODULAR BASE WORK TABLES

LENGTH	24" WIDE	WT (LBS)	30" WIDE	WT (LBS)	36" WIDE	WT (LBS)
48"	<b>4CS6R1.5-2448</b>	270	<b>4CS6R1.5-3048</b>	295	<b>4CS6R1.5-3648</b>	330
60"	<b>4CS6R1.5-2460</b>	310	<b>4CS6R1.5-3060</b>	335	<b>4CS6R1.5-3660</b>	370
72"	<b>4CS6R1.5-2472</b>	355	<b>4CS6R1.5-3072</b>	375	<b>4CS6R1.5-3672</b>	415
84"	<b>4CS6R1.5-2484</b>	395	<b>4CS6R1.5-3084</b>	415	<b>4CS6R1.5-3684</b>	455
96"	<b>4CS6R1.5-2496</b>	455	<b>4CS6R1.5-3096</b>	460	<b>4CS6R1.5-3696</b>	500
108"	<b>4CS6R1.5-24108</b>	485	<b>4CS6R1.5-30108</b>	460	<b>4CS6R1.5-36108</b>	540
120"	<b>4CS6R1.5-24120</b>	520	<b>4CS6R1.5-30120</b>	500	<b>4CS6R1.5-36120</b>	580
132"	<b>4CS6R1.5-24132</b>	555	<b>4CS6R1.5-30132</b>	608	<b>4CS6R1.5-36132</b>	623
144"	<b>4CS6R1.5-24144</b>	590	<b>4CS6R1.5-30144</b>	635	<b>4CS6R1.5-36144</b>	665

ALL DIMENSIONS ARE TYPICAL. TOLERANCE +/- .500". JOHN BOOS & CO. RESERVES THE RIGHT TO CHANGE SPECIFICATIONS WITHOUT NOTICE.