

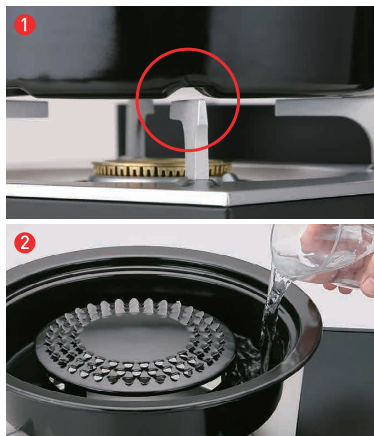
Iwatani Accessory Series "ABURI" Grill Plate

Model:CB-P-AM3

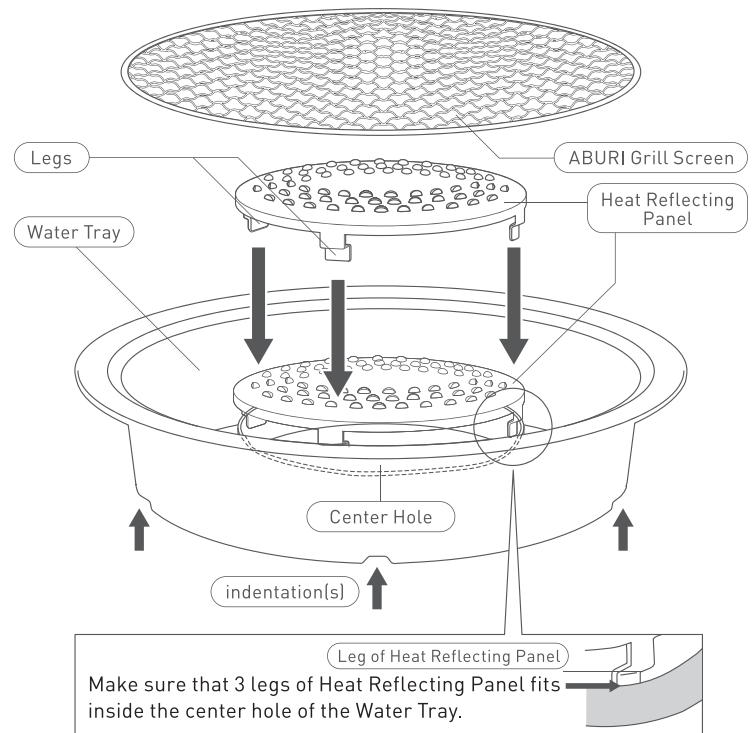
For use only with Iwatani Cassette Feu Portable Butane Stove
Be sure to read this entire instruction manual before using this product. Retain this instruction manual for future reference.

HOW TO USE "ABURI" Grill Plate

- 1 Place Heat Reflecting Panel on to Water Tray. Make sure that 3 legs of Heat Reflecting Panel fits inside the center hole of the Water Tray.
- 2 Fill the Water Tray with approx. 12oz/350ml water.
- 3 Place the ABURI grill screen on top of Water Tray.
- 4 Place the Water Tray on to the stove. Make sure that the pan supports of the stove fit into the indentations on the Water Tray.



NAME OF PARTS



WARNING

- Do not, under any circumstances, heat the pan without water in it. Doing so can cause cracks and damage the enamel.
- Be sure to fill the Water Tray with water to the eight-tenths mark (approx. 12oz/350cc) before using. If the water level drops during use, refill with water to ensure that the Water Tray always has water in it. If all the water evaporates, the grill will begin smoking badly and depending on the circumstances, collected fat or the food being grilled can burn, causing a fire.
- During and after grilling, all components will be hot and can cause burns. Use an oven mitt or similar item, and be very careful when handling.
- Keep out of the reach of children.
- Do not use any other cooking appliances other than Iwatani Portable Butane stove.

CAUTION

- If cooking fatty meat or fish, the fat can drip, causing the flames to burn higher. Use caution cooking those types of foods.
- Do not pour cold water over this product when it is hot, and do not cause sudden changes in the temperature level. Doing so can cause deformities in the main unit or can cause cracks and damage the enamel.
- Placing this unit over the center of the portable butane stove provides more stability. Confirm the stability of the Grill Plate before use. Use all four pan supports. If the Grill Plate is not stable, it can fall resulting in burns or other serious injuries.

[OTHER CAUTIONS]

- Before using this product for the first time, be sure that it is stable and that there are no cracks or other defects.
- This product is dish washer safe. Do not use metal scrubbers, abrasive cleaners or similar items as they will damage the enamel.

CALIFORNIA PROPOSITION 65 WARNING

WARNING: This product contains chemicals known to the State of California to cause cancer, or birth defects or other reproductive harm.